

CUSTOMER NO. :

FM MODEL: F7530B12L-001

## SPECIFICATION FOR APPROVAL/规格承认书

### 1. SCOPE/适用范围:

THIS SPECIFICATION DEFINES THE ELECTRICAL AND MECHANICAL CHARACTERISTICS OF THE DC BRUSHLESS FAN.

本规范规定了直流无刷风扇的电气与机械特性

### 2. CHARACTERS/特征:

	ITEM/项目	SPEC/规格.
2-1.	RATED VOLTAGE/额定电压	12.0 VDC
2-2.	OPERATION VOLTAGE/操作电压	7~ 13.2 VDC
2-3.	RATED CURRENT/额定电流	0.18A (AVERAGE/平均值) 0.26A(MAX/最大值)
2-4.	RATED POWER/额定功率	2.16 (3.12 MAX.) W
2-5.	SPEED/转速	2800 ±10% RPM
2-6.	SPEED CONTROL TYPE/转速控制类型	N/A
2-7.	SIGNAL OUTPUT/信号输出	N/A
2-8.	MAX. AIR FLOW /最大风量 (AT ZERO STATIC PRESSURE/在零静压状态下)	11CFM 0.21m <sup>3</sup> /min
2-9.	MAX. AIR PRESSURE/最大风压 (AT ZERO FLOW/在零风量状态下)	5.37 mmH <sub>2</sub> O 0.21inchH <sub>2</sub> O
2-10.	ACOUSTICAL NOISE/声学噪音	36.9(MAX :39.9) dBA

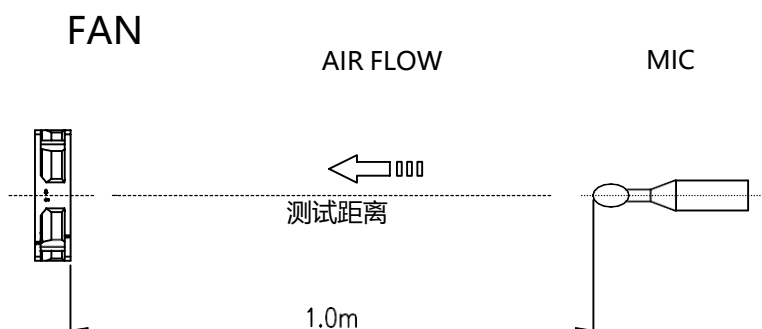
CUSTOMER NO. :

FM MODEL: F7530B12L-001

	ITEM/项目	SPEC/规格.
2-11.	INSULATION RESISTANCE 绝缘阻抗	10 MEGA OHM MIN. AT 500 VDC (BETWEEN FRAME AND (+) TERMINAL) 在风扇外框与导线正极之间输入直流500V, 绝缘阻值不小于10兆欧
2-12.	DIELECTRIC STRENGTH 绝缘耐压强度	5 mA MAX. AT 500 VDC ONE MINUTE, (BETWEEN FRAME AND (+) TERMINAL) 在风扇外框与导线正极之间输入交流500V, 测试电流不大于5mA
2-13.	LIFE EXPECTANCE 预期寿命	70,000 HOURS AT 40°C ROOM, AMBIENT 15%~65%RH 环境温度40°C, 湿度15%~65%,预期寿命为70000小时
2-14.	ROTATION/旋转方向	COUNTER-CLOCKWISE VIEWED FROM INLET/从进风口看为逆时针方向
2-15.	AIR FLOW DIRECTION/风量方向	AIR EXHAUST OVER STRUT
2-16.	INSULATION CLASS/绝缘等级	UL: CLASS A
2-17.	LEAD WIRE/导线	UL:1061AWG# 24 , --: BLACK +: RED

#### NOTES/说明:

- A. THE VALUES WRITTEN IN PARENTHESIS, ARE LIMITED SPEC/括号内数值为限制规格.  
B. ACOUSTICAL NOISE MEASURING CONDITION/噪音测试规范如下:

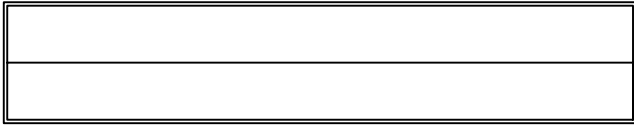


NOISE IS MEASURED AT RATED VOLTAGE IN FREE AIR IN ACOUSTICAL CHAMBER WITH LARSON DAVIS TYPE 824S SOUND LEVEL METER.

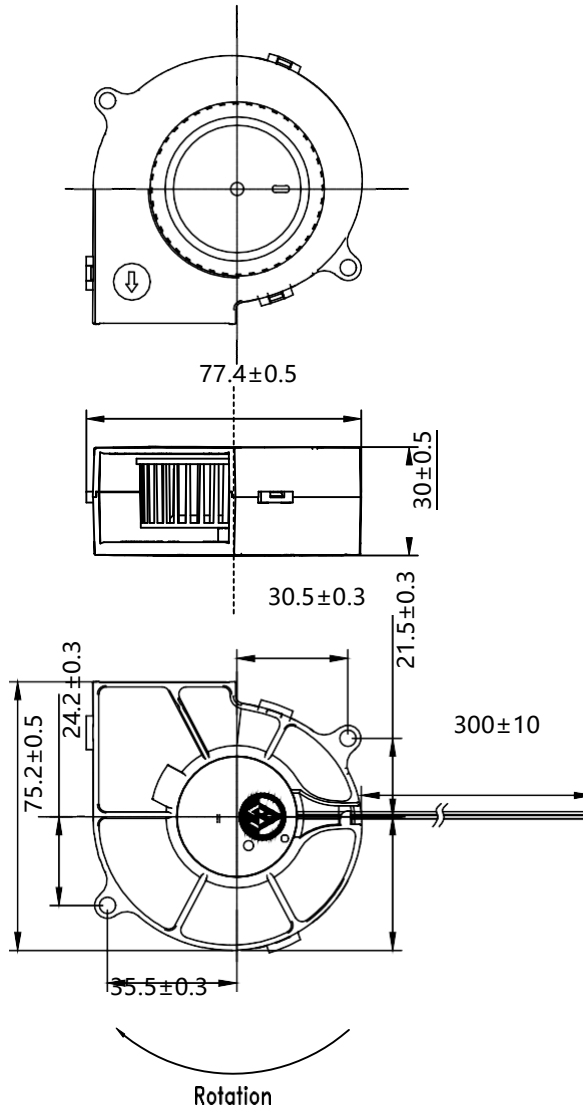
噪音测试在额定电压下, 自由大气中进行

- C. THE AIR FLOW AND AIR PRESSURE MEASURED AT RATED VOLTAGE IN DOUBLE CHAMBER IS MEASURED ACCORDING TO STANDARD AMCA210-2017.

风量和风压在额定电压下于风洞中进行量测, 量测标准依照AMCA210-2017.



7.DIMENSION DRAWING/外形尺寸图



NOTES/说明:

- 1. LEAD WIRES: PVC WIRES UL1061 AWG24#
- PIN1: RED WIRE..... (+)
- PIN2: BLACK WIRE..... (-)